

Installation guide for iZ3driverSetup.1.10.exe and settings for ARCHLine.XP 2010 3DTV module

Note! *This new ARCHline.XP 2010 module requires iZ3DDriverSetup driver installation. This driver will change the computer graphics card properties. It might happen that earlier ARCHline.XP releases (2009 and down) crashes after starting. In this case you should switch off the driver using the DISABLE STEREO option. See the description below.*

Before starting the installation, please be sure that your graphics card capability satisfies the minimum requirements of **Nvidia GeForce 7900** or **ATI Radeon X series**, otherwise you may not use ARCHLine.XP 2010 or later 3DTV module.

Note! **User should have system administrator rights to install and uninstall the iZ3driverSetup Driver. If user does not have rights, a warning message will be displayed and the installation will be stopped. Driver will not be installed without administrator rights.**

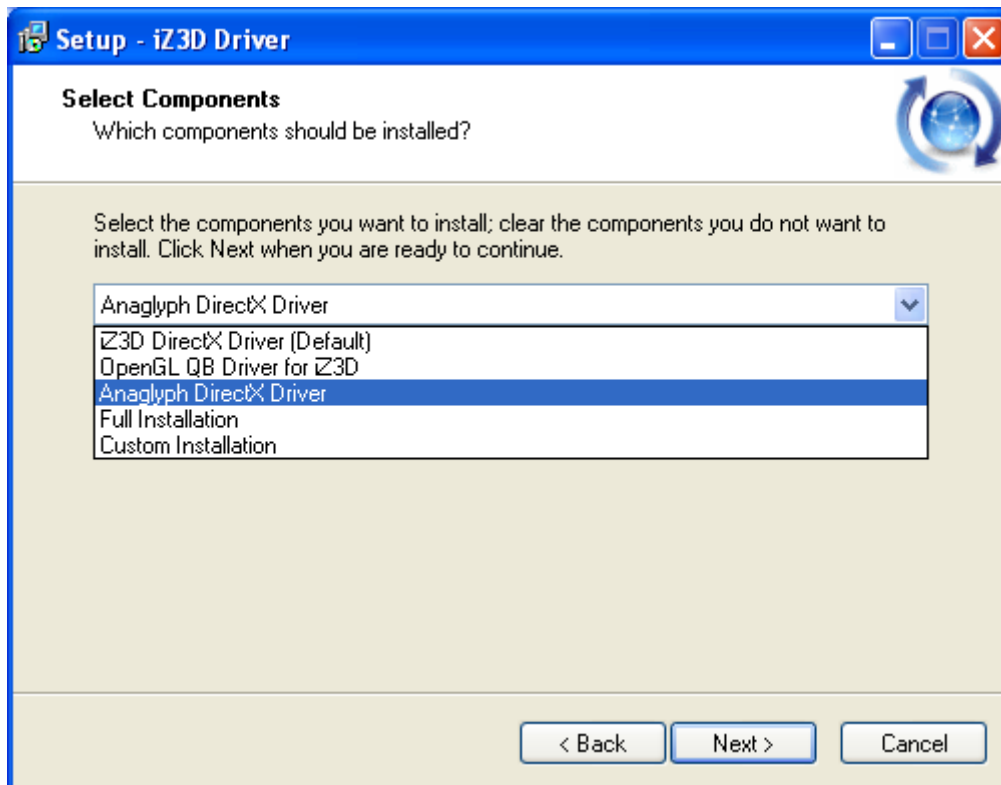
To install the Driver, download and run iZ3DDriverSetup.1.10.exe from here:

<http://www.archlinexp.com/downloads/drivers>

If a previous Driver version is currently installed, then the user should exit all 3D applications before installing the new driver version. The new driver version will automatically remove the previous Driver program.

Note! **If you have a previous iZ3D driver version already installed on your PC, the installation program will uninstall it automatically; but to prevent possible software confrontation it is recommended to uninstall it manually before installation.**

The Driver will display the list of outputs and components during installation. Select *Anaglyph DirectX Driver*:

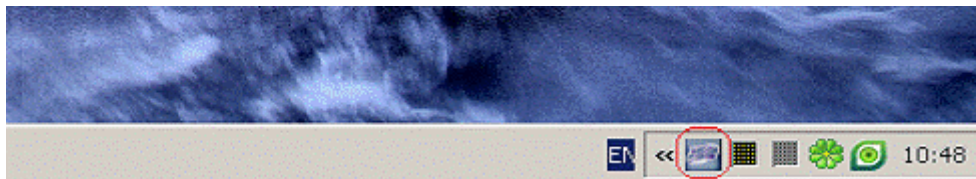


If DirectX runtime is not updated on the user's PC, the Driver will ask to update. If user accepts the update, the Driver will connect to the Microsoft update center to download and install the latest DirectX runtime.

After installation is finished, the setup ending menu will appear. Use the following settings:



After installation is complete the Driver icon will appear in the tray area (if user did not uncheck the “Run Control Center” checkbox in the setup ending menu), which will show Driver status. Driver can be enabled / disabled through this icon.



The Driver creates three files with key parameters during installation:

Config.xml – initial settings for Driver

BaseProfiles.xml – profile for iZ3D internal settings in the following directories:

XP: “\Documents and Settings\All Users\Application Data\iZ3D Driver\”

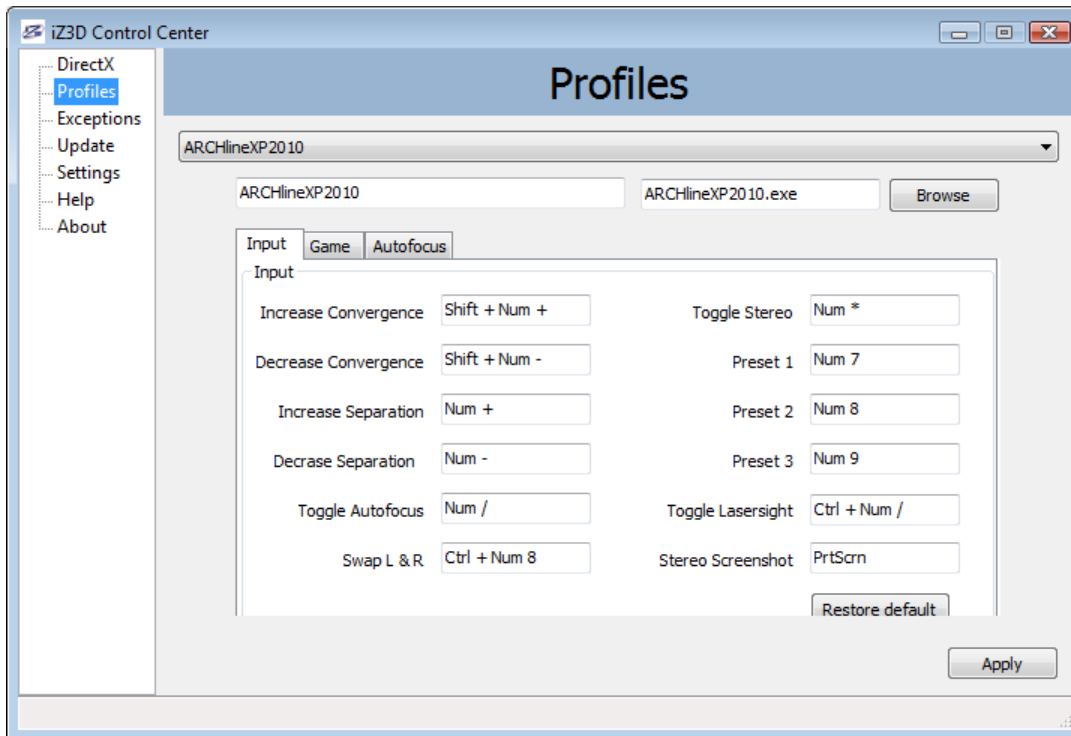
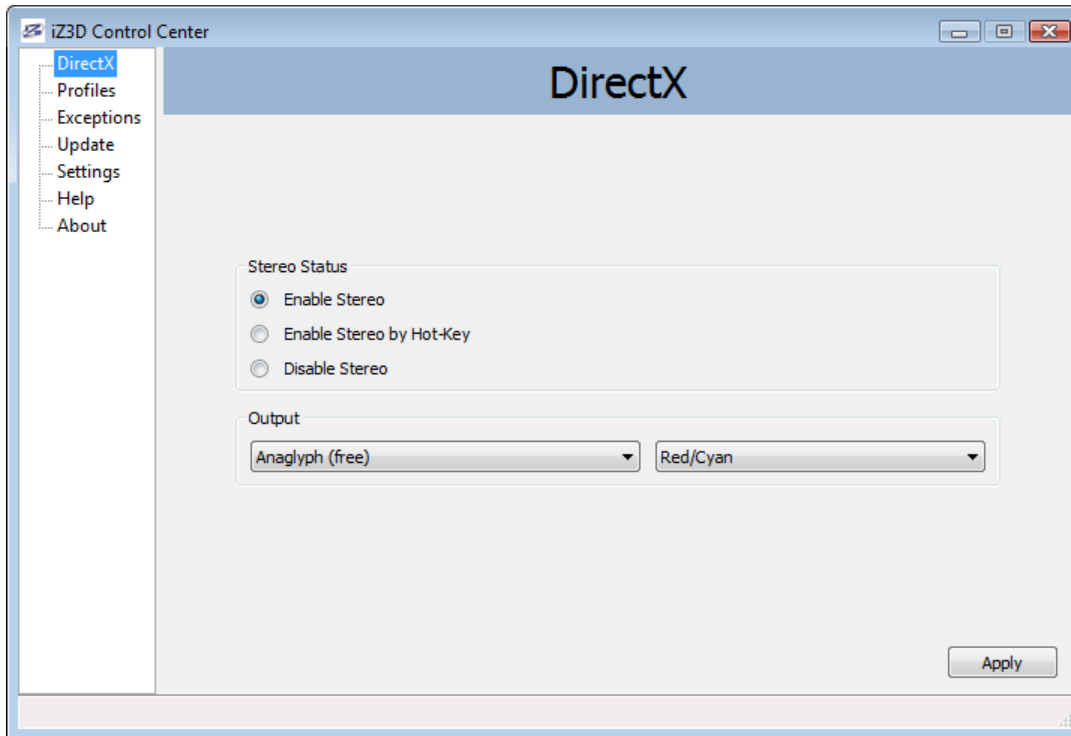
Vista/7: “\ProgramData\iZ3D Driver\”

and UserProfile.xml - profile for user settings in:

XP: “\Documents and Settings\

Vista/7: “\Users\

To make sure that your settings are suitable for ARCHLine.XP 3DTV module, please start iZ3D Control Center and check the following settings



Note! Please do not change the profile settings because other key combinations are not guaranteed to work properly.

